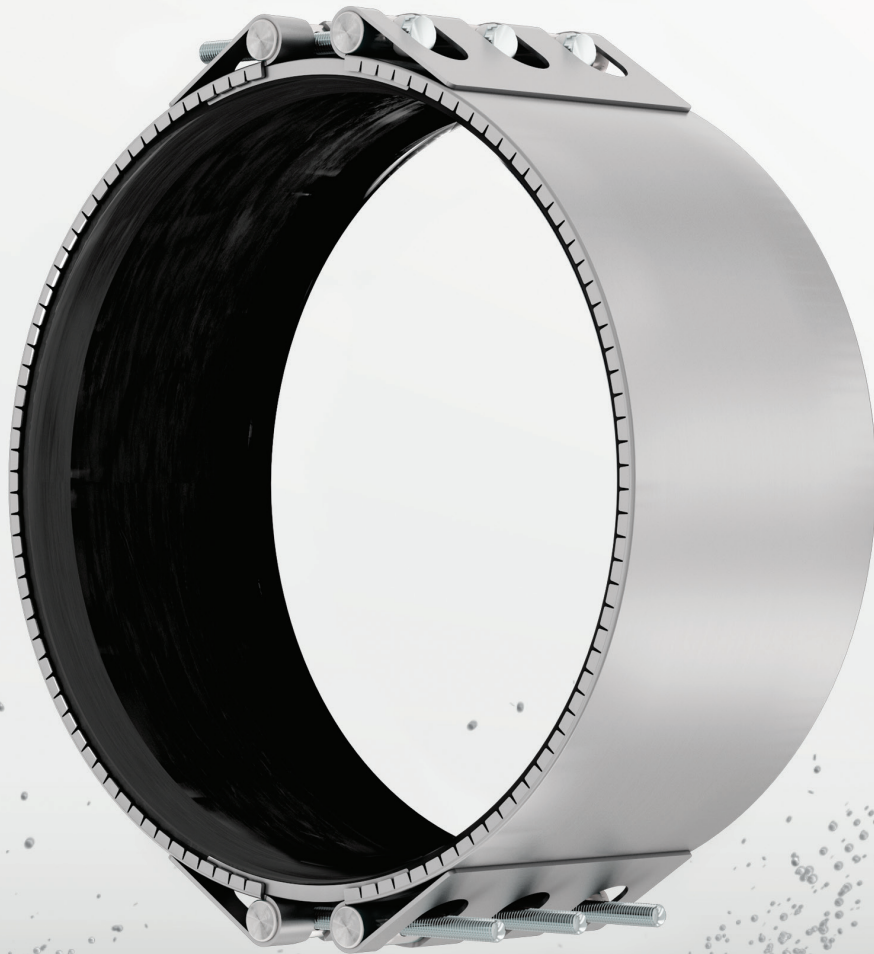




NEO'S SECOND GENERATION IS HERE



NEO 2.0

Open. Close. Done.

I AM NEO, UPGRADED

Stronger, to withstand pressures up to PN16 across my entire range. Easier to install, providing a perfect fit every time. More flexible, to repair any pipe at any time. Easier to inventory. Covers all pipe sizes from DN40 to DN400.

Offering greater value, and the high quality that comes with the Arpol name. I am the newest member of the family, I am the smart choice. I am NEO.



MORE
RESISTANT



EASY TO
INSTALL



EASY TO
INVENTORY

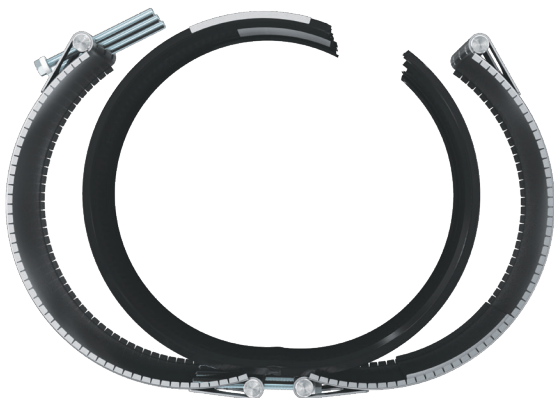


ULTRA
FLEXIBLE



CORROSION
RESISTANT

NEO REFERENCE	RANGE	BOLT
NEO 47-55 PN16	47 - 55	M10
NEO 54-62 PN16	54 - 62	M10
NEO 63-71 PN16	63 - 71	M10
NEO 72-84 PN16	72 - 84	M10
NEO 82-95 PN16	82 - 95	M10
NEO 93-110 PN16	93 - 110	M10
NEO 109-126 PN16	109 - 126	M10
NEO 125-142 PN16	125 - 142	M10
NEO 141-158 PN16	141 - 158	M10
NEO 155-172 PN16	155 - 172	M10
NEO 168-185 PN16	168 - 185	M10
NEO 186-208 PN16	186 - 208	M12
NEO 206-228 PN16	206 - 228	M12
NEO 229-251 PN16	229 - 251	M12
NEO 248-270 PN16	248 - 270	M12
NEO 265-287 PN16	265 - 287	M12
NEO 286-308 PN16	286 - 308	M12
NEO 309-331 PN16	309 - 331	M12
NEO 330-352 PN16	330 - 352	M12
NEO 350-372 PN16	350 - 372	M12
NEO 373-395 PN16	373 - 395	M12
NEO 395-417 PN16	395 - 417	M12



— PROGRESSIVE SEALING SYSTEM

— 200MM WIDTH

— MADE OF AISI 304L STAINLESS STEEL

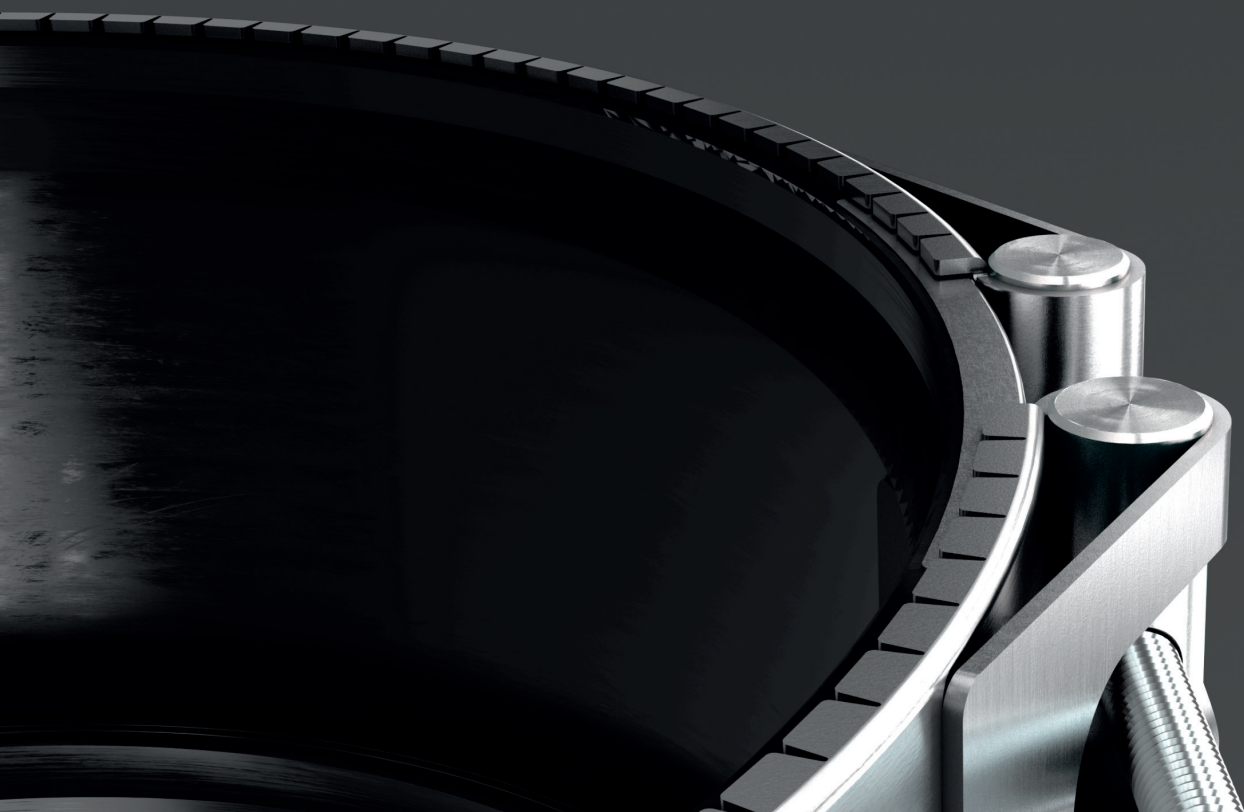
— EPDM GASKET APPROVED FOR DRINKING WATER

NEO REFERENCE	CAST IRON DRAIN (EN 877)		CAST IRON SOIL (EN 545)		GREY CAST IRON		PE - PVC		GRP		ASBESTOS CEMENT		ASBESTOS CEMENT (DIN 19800)		STEEL PIPE		STAINLESS STEEL PIPE	
	DN	OD	DN	OD	DN	OD	DN	OD	DN	OD	DN	OD	DN	OD	DN	OD	DN	OD
	mm		mm		mm		mm		mm		mm		mm		mm		mm	
NEO 47-55 PN16	40	48					40	50							40	48,3	40	51
NEO 54-62 PN16	50	58	40	56	40	56	50	60							50	57	50	57
															50	60,3	50	60,3
NEO 63-71 PN16	50	66			50	66	50	63							50	60,3	50	63,5
						68									50		50	70
NEO 72-84 PN16	70	78	60	77	60	79	60	75			60 AF	75-80	65	83	60/65	76,1	65	76,1
			65	82	65	81	60	76,1									80	82,5
					65	82												
NEO 82-95 PN16	80	83			70	86	80	88,9			70 AF	85-92	65	85	80	88,9	80	88,9
					80	80	80	89										
NEO 93-110 PN16			80	98	80	95					80 AD	97-102	80	98	100	108	90	101,6
					80	98					80 AF	100-105	80	100			90	104
					90	107							80	104				
NEO 109-126 PN16	100	110	100	118	100	118	100	110	100	110	100 AD	116-122	100	118	100	114,3	100	114,3
					100	121	100	114,3	100	116			100	120				
					100	125	100	125					100	124				
NEO 125-142 PN16	125	135					125	140	125	125	100 EF	123-129	100	130	125	129	125	139,7
									125	139					125	133		
														125	139,7			
NEO 141-158 PN16			125	144	125	144					125 AC	143-147	125	145	150	154	150	154
					125	149					125 AD	148-153	125	149				
													125	153				
NEO 155-172 PN16	150	160	150	170	150	170	150	160	150	160	125 EF	155-160	125	159	150	159	150	159
							150	168,3	150	162			150	172	150	168,3	150	168,3
NEO 168-185 PN16					150	177	175	180	150	168	150 AB	169-173	150	178				
											150 AD	173-177	150	182				
											150 D	177-181						
NEO 186-208 PN16					175	197	200	200	200	200	150 EF	186-190	150	190				
					175	204	200	200	200	200	175 AB	194-198						
											175 C	202-206						
NEO 206-228 PN16	200	210	200	222	200	222	200	219,1	200	219	175 D	206-210	200	226	200	219,1	200	219,1
							225	225	200	220	175 EF	217-221						
											200 AC	221-225						
NEO 229-251 PN16					200	232					200 D	231-235	200	234	250	244,5		
					225	245					200 E	235-239	200	240				
NEO 248-270 PN16					225	259	250	250	250	250	200 EF	248-252	200	252				
NEO 265-287 PN16	250	274	250	274	250	274	250	273	250	272	250 AB	271-275	250	278	250	267		
					250	285	275	280			250 C	279-283	250	286	250	273	250	273
NEO 286-308 PN16					275	296					250 D	286-290	250	296				
											250 E	292-296						
											250 E	300-305						
NEO 309-331 PN16	300	326	300	326	300	324	300	315	300	310	250 EF	311-316	250	308	300	323,9	300	323,9
					300	326	300	323,9	300	315	300 A	321-326						
										300	300 A	324-329						
										300	300 AB	326-331						
NEO 330-352 PN16					300	345					300 C	330-335	300	334				
											300 B	334-339	300	342				
											300 D	339-334						
NEO 350-372 PN16							350	355	350	355	300 D	350-355	300	352	350	355,6	350	355,6
									350	361	300 E	353-358	300	368				
											300 EF	360-365						
NEO 373-395 PN16			350	378	350	378			350	376	350 A	373-378	350	388				
					350	386					350 A	378-383						
											350 AB	380-385						
											350 B	388-393						
											350 C	385-390						
NEO 395-417 PN16					375	398	400	400	400	400	350 D	395-400	350	400	400	406,4	400	406,4
					375	413	400	406,4	400	412	350 C	398-403						
											350 D	408-413						
											350 E	411-416						

BORN OUT OF INNOVATION

I come from a family of industry pioneers. With over 40 years of experience in design and manufacturing, the Arpol name stands for high-quality coupling solutions.

I am the newest and the latest of my generation, a coupling designed to solve the piping problems of today and to lead the innovation of the future.



LET'S CONNECT

Find full product information at
www.arpol.com

For any enquiry, reach out to us on:

hello@arpol.com

T. +34 93 828 45 05

Uniones Arpol

C/Rosa dels Vents No 17-23 Pol. Ind. La
Suïssa 08338 - Premià de Dalt
Barcelona, Spain



**Because
connecting
matters**
www.arpol.com